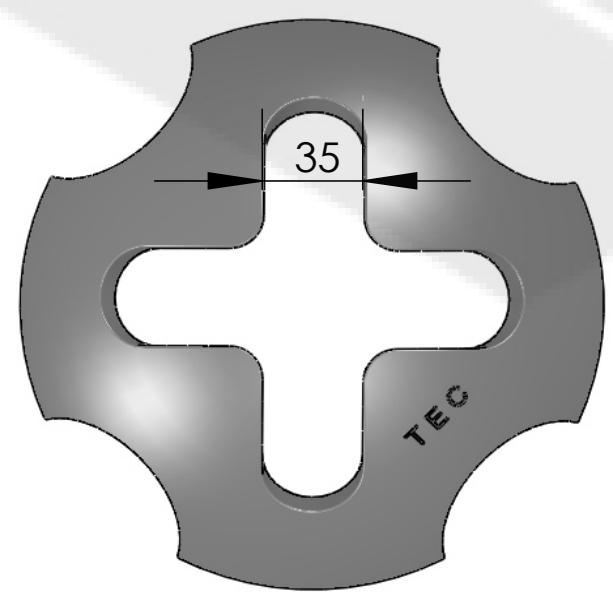
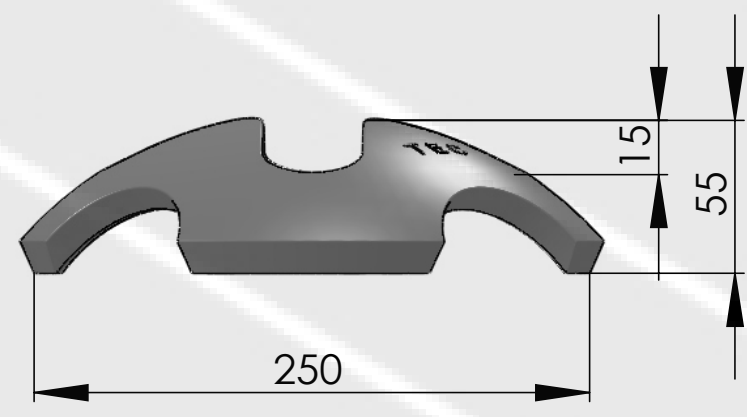
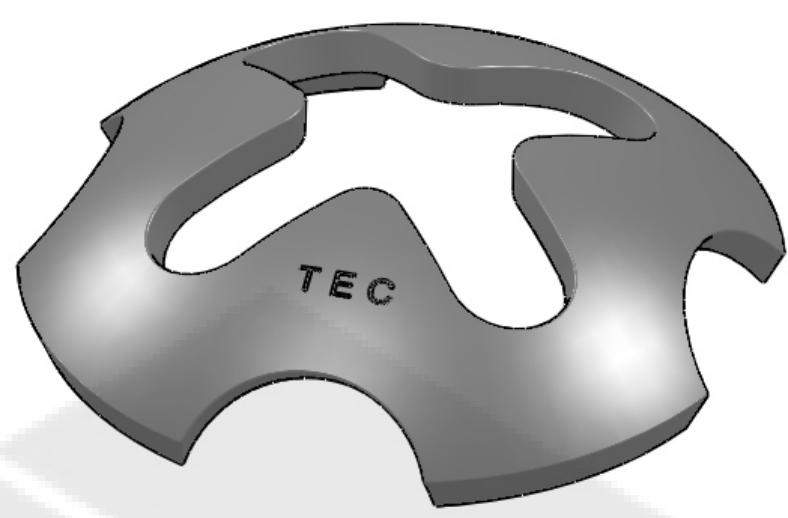


This drawing is valid for commercial purposes only and must not be copied, disclosed or used without our permission



Material:	CAST STEEL
Weight:	4.3 Kg
SWL	100 kN
BL	200 kN

SALADA INDUSTRIES FOR METAL
+966 50 016 5914
www.salada.sa
hello@salada.sa



Description:	RAISED ELEPHANT FOOT FOUNDATION
Reference:	FA-06-1