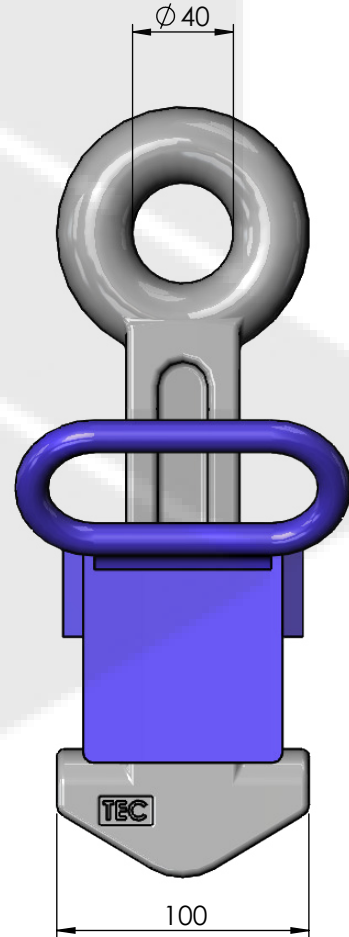
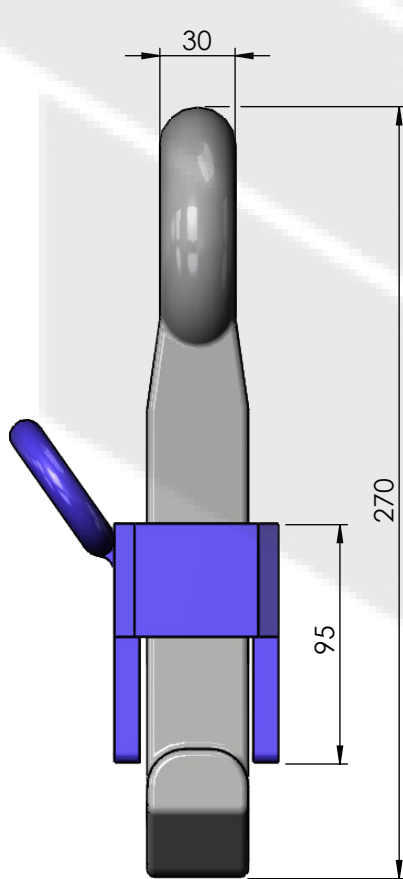
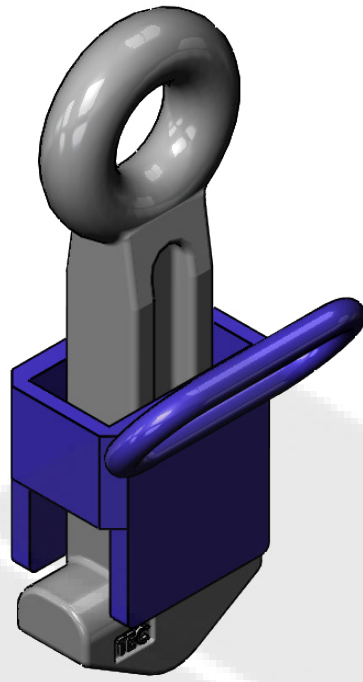


This drawing is valid for commercial purposes only and must not be copied, disclosed or used without our permission



Material: **High tensile steel**

Weight: **5.75 kg**

SWL **150 kN**

BL **300 kN**

SALADA INDUSTRIES FOR METAL
 +966 50 016 5914
www.salada.sa
hello@salada.sa



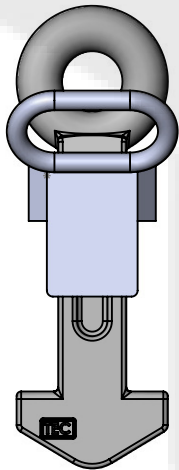
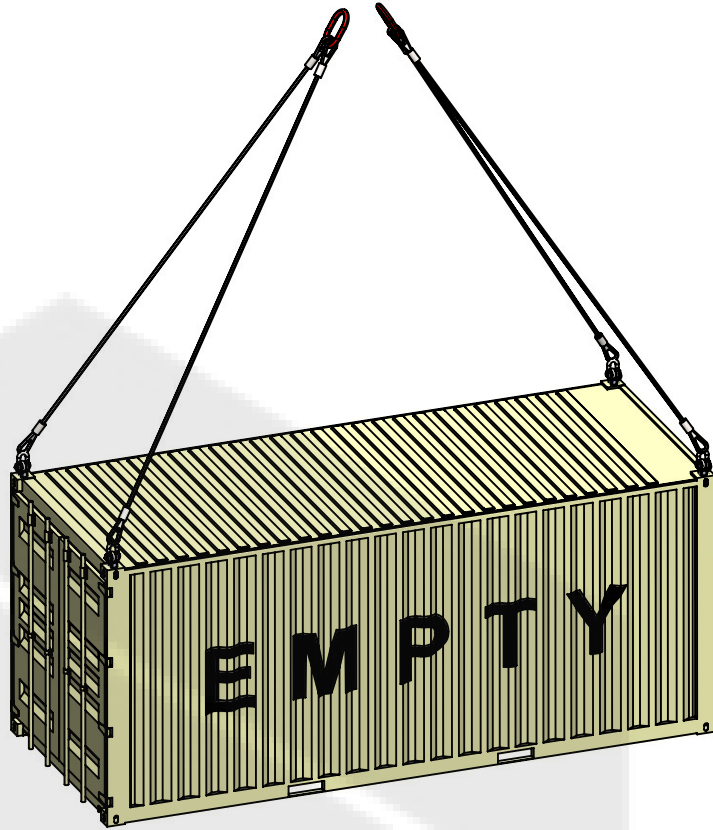
Description:

VERTICAL LIFTING LUG

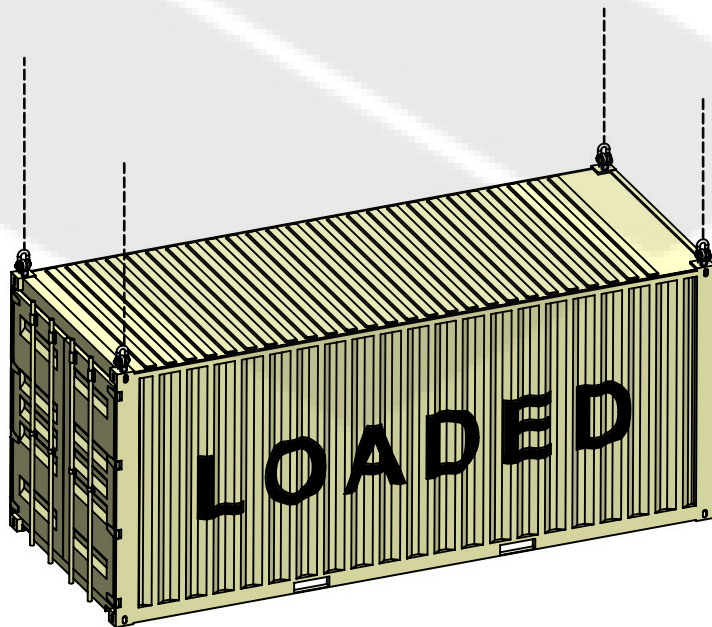
Reference:

GE-11

Configuration for lifting **EMPTY** containers only.
 Configuración para elevación **SÓLO** de contenedores **VACÍOS**.



GE-11



Configuration for lifting **LOADED** containers (UP TO 60t)

Configuración para elevación de contenedores **CARGADOS** (hasta 60t)

Material:	High tensile steel
Weight:	5.75 kg
SWL	150 kN
BL	300 kN

SALADA INDUSTRIES FOR METAL
 +966 50 016 5914
www.salada.sa
hello@salada.sa



Description:

E

G

G

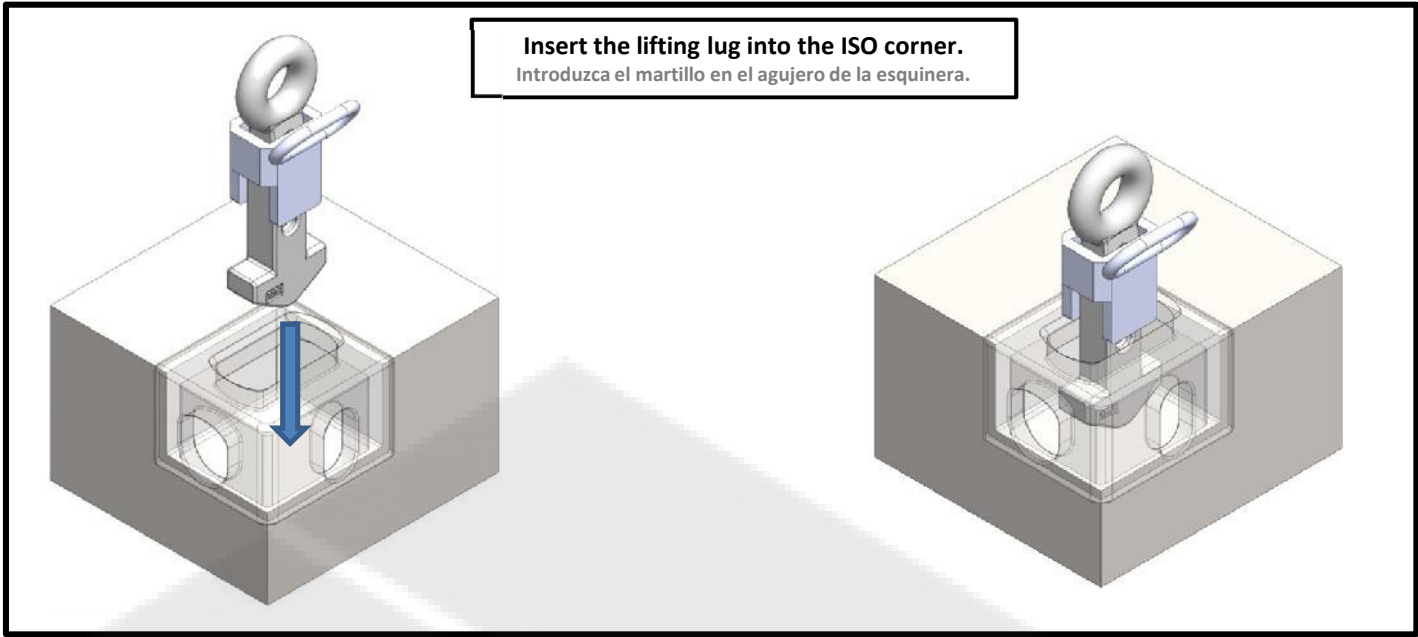
Reference:

GE-11

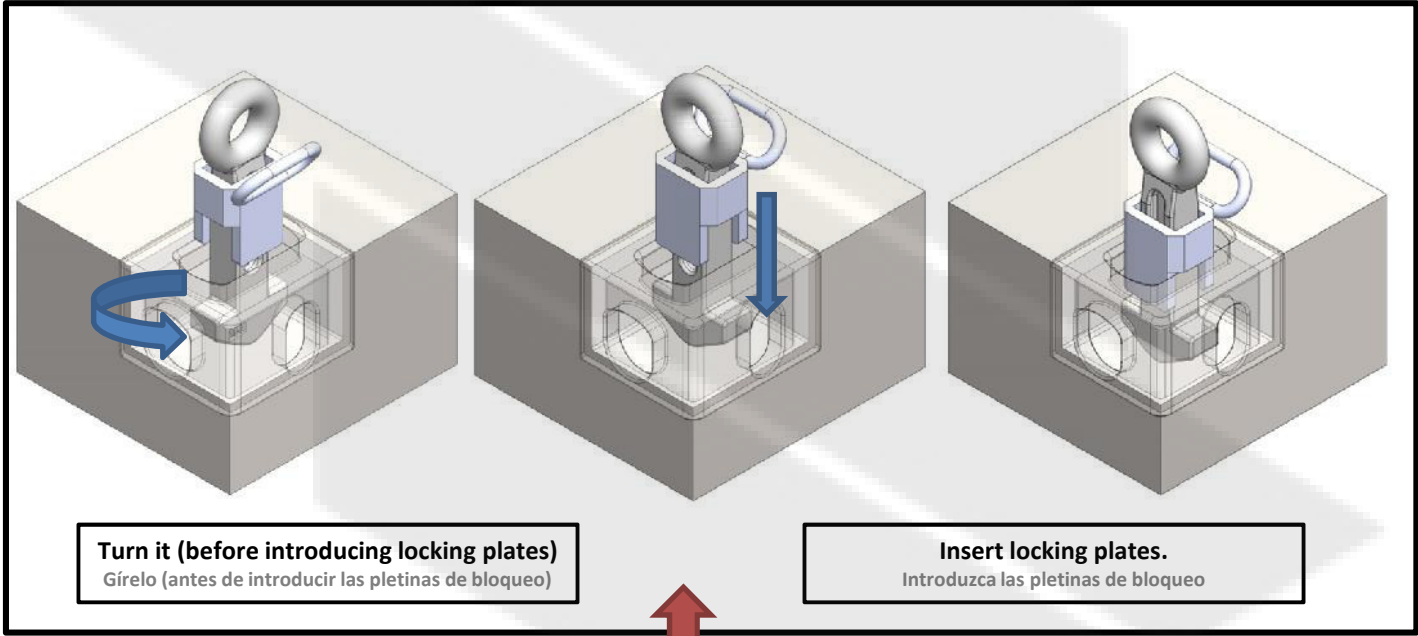
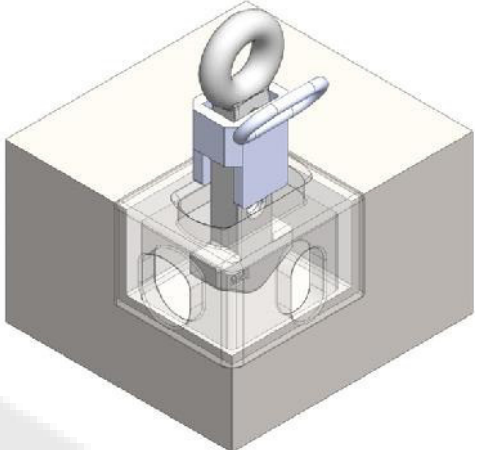
Real pieces might have variations in details such as weight and sizes

This drawing is valid for commercial purposes only and must not be copied, disclosed or used without our permission

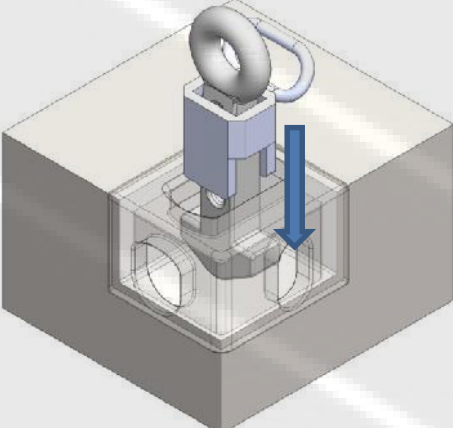
This drawing is valid for commercial purposes only and must not be copied, disclosed or used without our permission



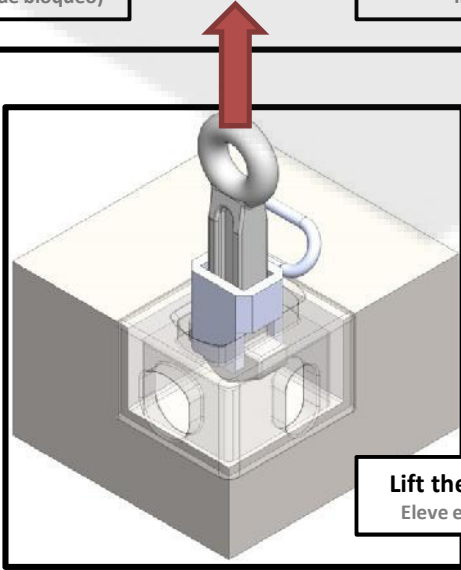
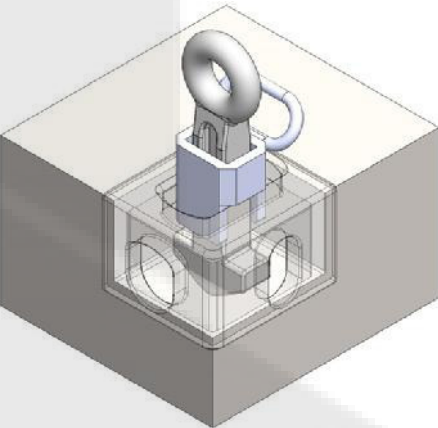
Insert the lifting lug into the ISO corner.
Introduzca el martillo en el agujero de la esquinera.



Turn it (before introducing locking plates)
Gírelo (antes de introducir las pletinas de bloqueo)



Insert locking plates.
Introduzca las pletinas de bloqueo



Lift the container.
Eleve el contenedor

Material:	High tensile steel
Weight:	5.75 kg
SWL	150 kN
BL	300 kN

SALADA INDUSTRIES FOR METAL
+966 50 016 5914
www.salada.sa
hello@salada.sa



Description:	VERTICAL LIFTING LUG
Reference:	GE-11