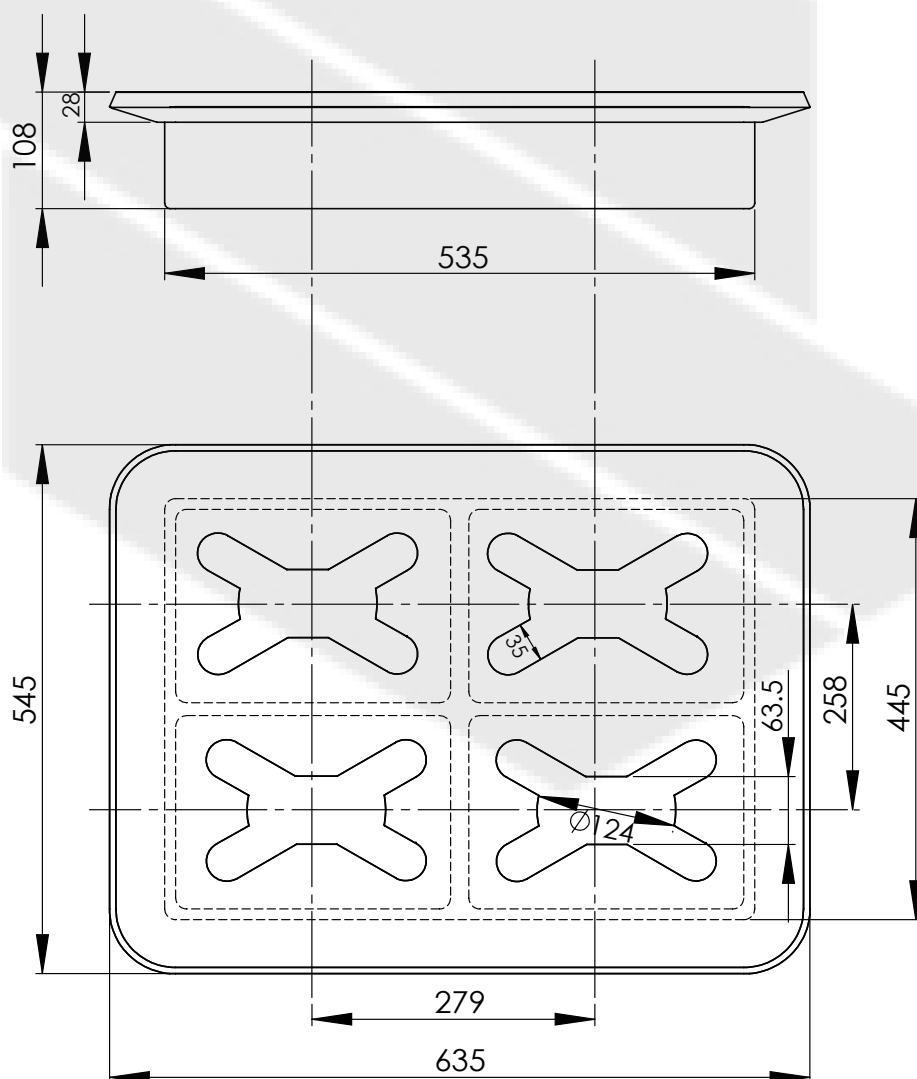
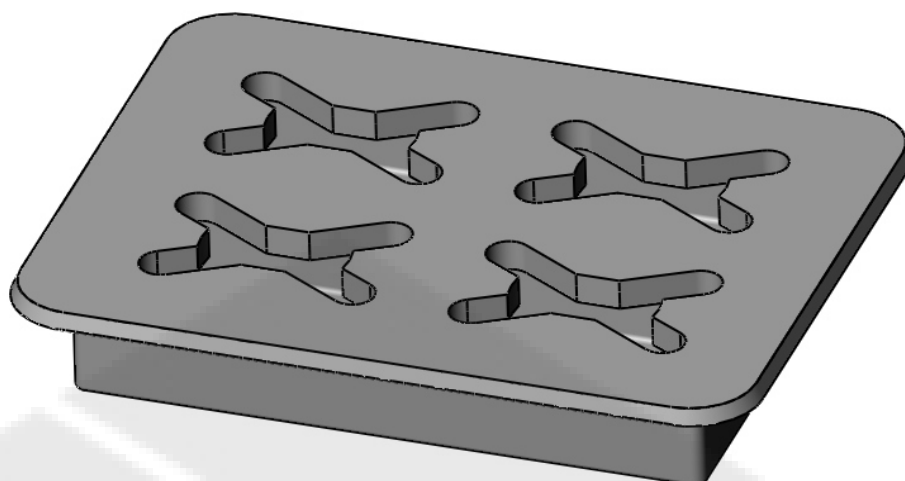


This drawing is valid for commercial purposes only and must not be copied, disclosed or used without our permission



| | | |
|---------------|----------------|-------------------------|
| Material: | Weldable steel | |
| Weight: | 79 kg | |
| SWL Container | 150 kN | SWL Elephant ft. 100 kN |
| BL Container | 300 kN | BL Elephant ft. 200 kN |

SALADA INDUSTRIES FOR METAL
+966 50 016 5914
www.salada.sa
hello@salada.sa



| | |
|--------------|--|
| Description: | QUADRUPLE STACKING FOUNDATION |
| Reference: | FE-38E-4(80) |