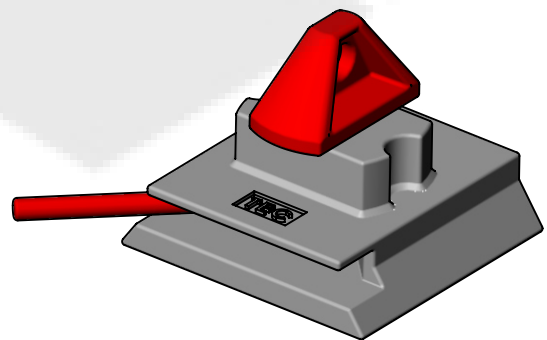
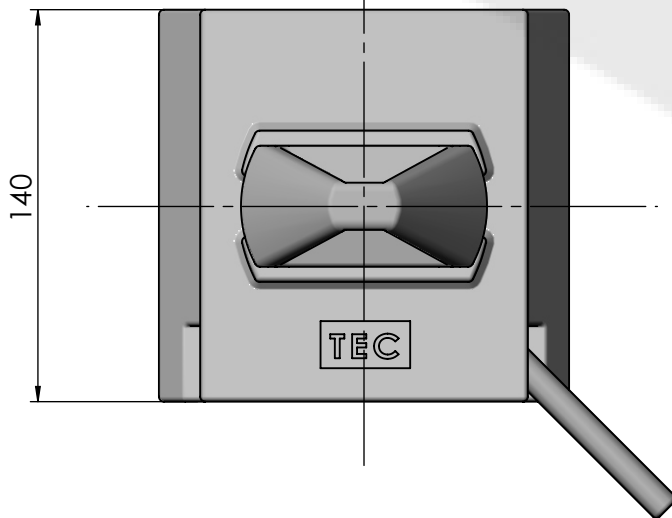
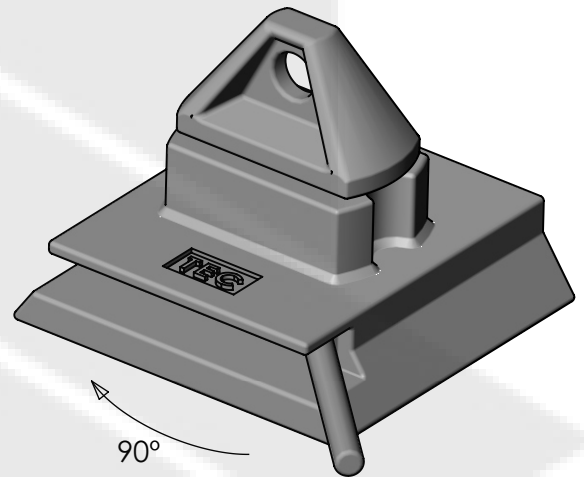
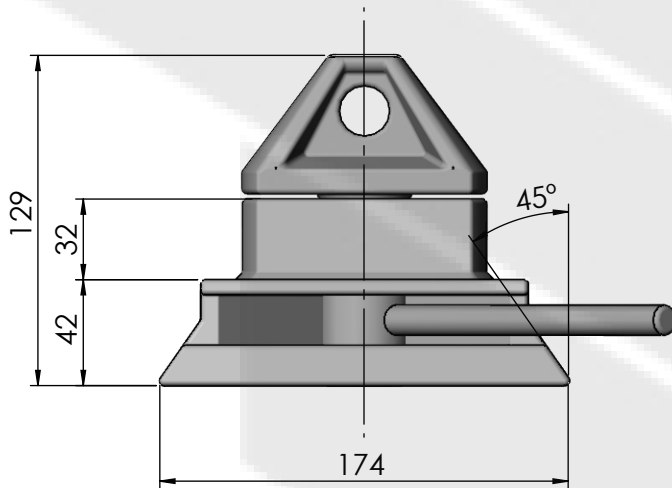
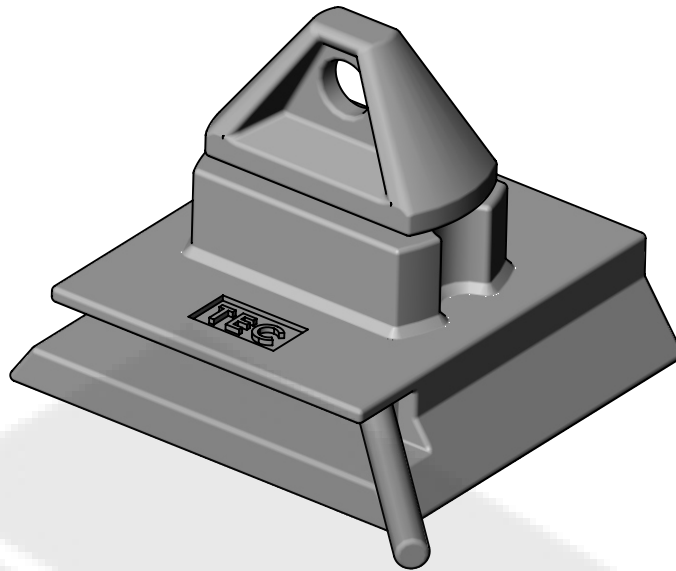


This drawing is valid for commercial purposes only and must not be copied, disclosed or used without our permission



Material:	Ductile Iron (housing)	
	Drop forged (cone)	
Weight:	6.67 kg	
SWL Tension	250 kN	SWL Shear 210 kN
BL Tension	500 kN	BL Shear 420 kN

SALADA INDUSTRIES FOR METAL  
 +966 50 016 5914  
[www.salada.sa](http://www.salada.sa)  
[hello@salada.sa](mailto:hello@salada.sa)



Description:  
**DOVETAIL BASE  
 TWISTLOCK  
 (transversal)**

Reference:  
**CB-25-1G**